

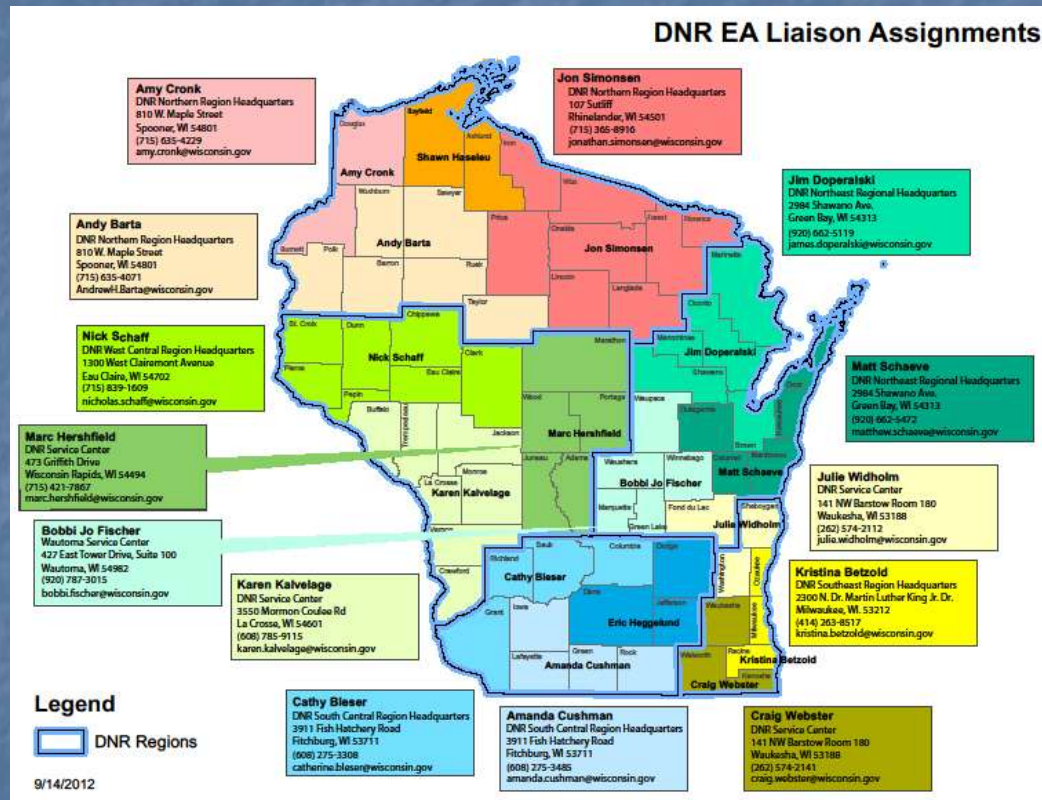
GP timeline

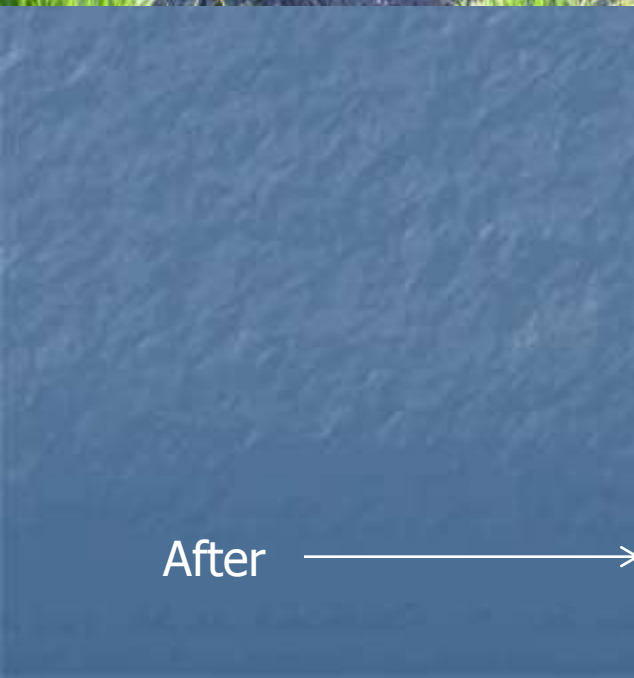
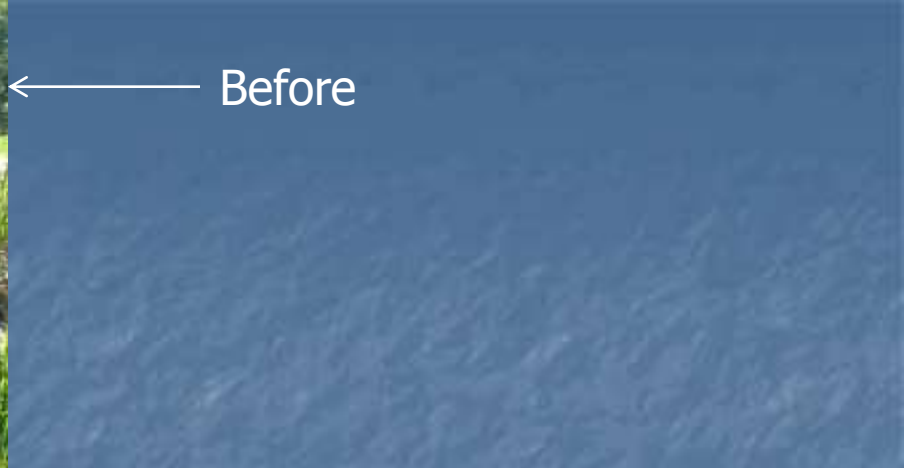
- Draft issued August for comments
- DNR worked closely with Towns Assn., County Highways Assn., and League of Municipalities
- Final GP in use by November 1



We will work together to get through the process... and have quality projects

DNR single point of contact





Can we eliminate barriers?

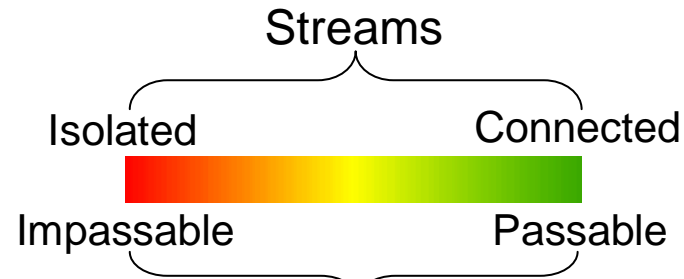


Research on barriers to fish passage...

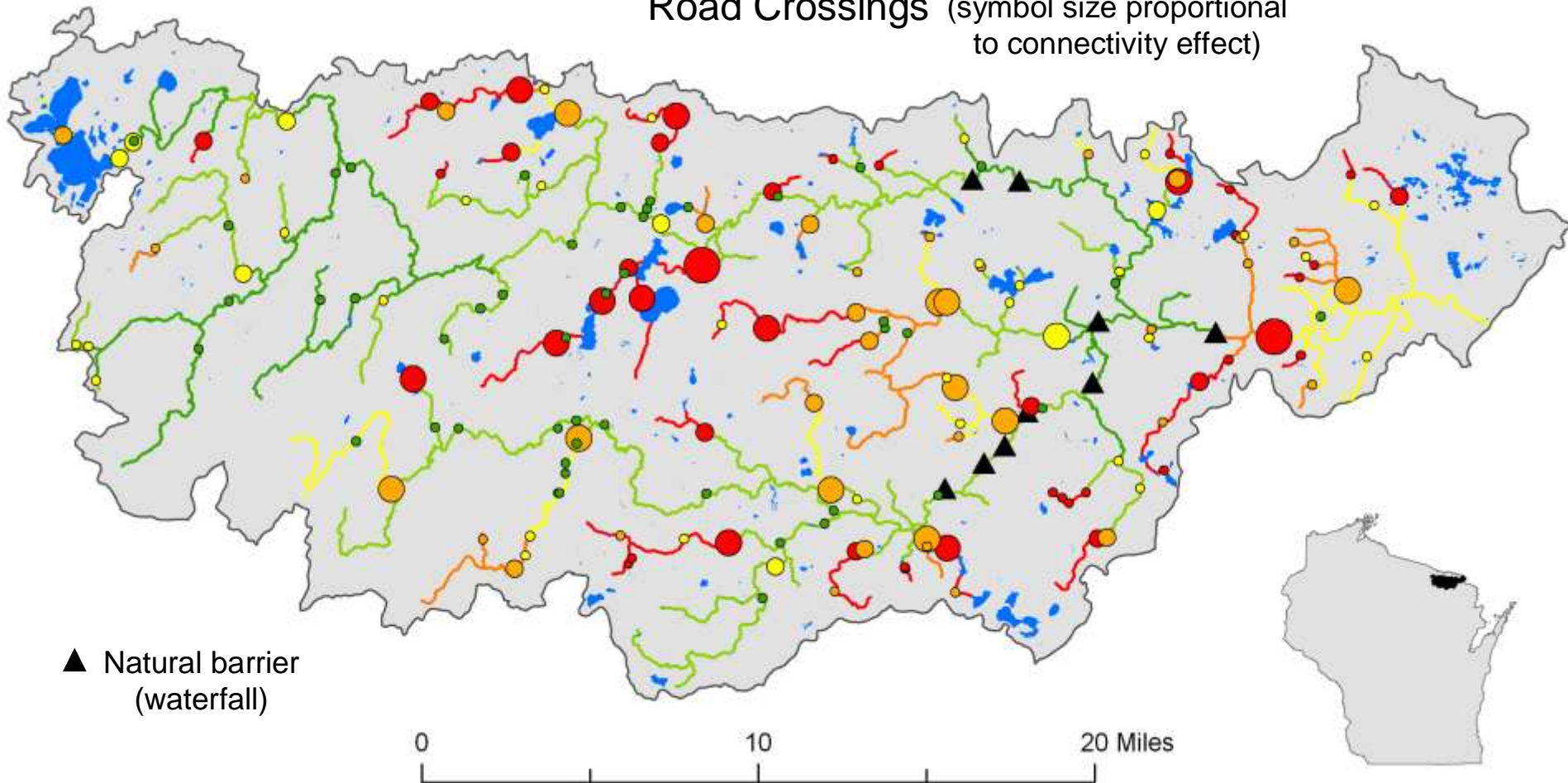
- Manitowish River Headwaters, WI (2009) **77%** of crossings were barriers
- Pine and Popple Rivers, WI (2007) **20%** of crossings were barriers
- Etowah R. Basin, GA (2006) **34%** of crossings...
- Upper Cheat R., WV (2005) **69%** of culverts...
- Jefferson Co., WA (2000) **50%** of culverts...
- Humboldt Co., CA (2000) **37%** of culverts...



Pine-Popple Watershed



Road Crossings (symbol size proportional to connectivity effect)





Outlet







WETLAND Concerns

- **Avoid wetland impacts if possible**
- **Minimize wetland impacts**
 - **BMPs**
 - **Tighten up slopes**
 - **Location of work zones**



Things go well when

- **We can meet with you early.**

- We like to meet onsite to determine if permits are required and to identify the resources that could be impacted.

- **There is a good design plan.**

- This helps make sure that the municipality, DNR, and contractor are all on the same page.

- **Someone reads and understands the conditions of the permit or approval letter.**

- Make sure the crew doing the work understand the permit conditions.

- **You contact DNR if there is sediment or muddy water reaching wetlands or waterways.**

Our goals

- Early coordination
- Meet your timelines
- Quality designs
- Simple projects with a simple permit process

Questions?

